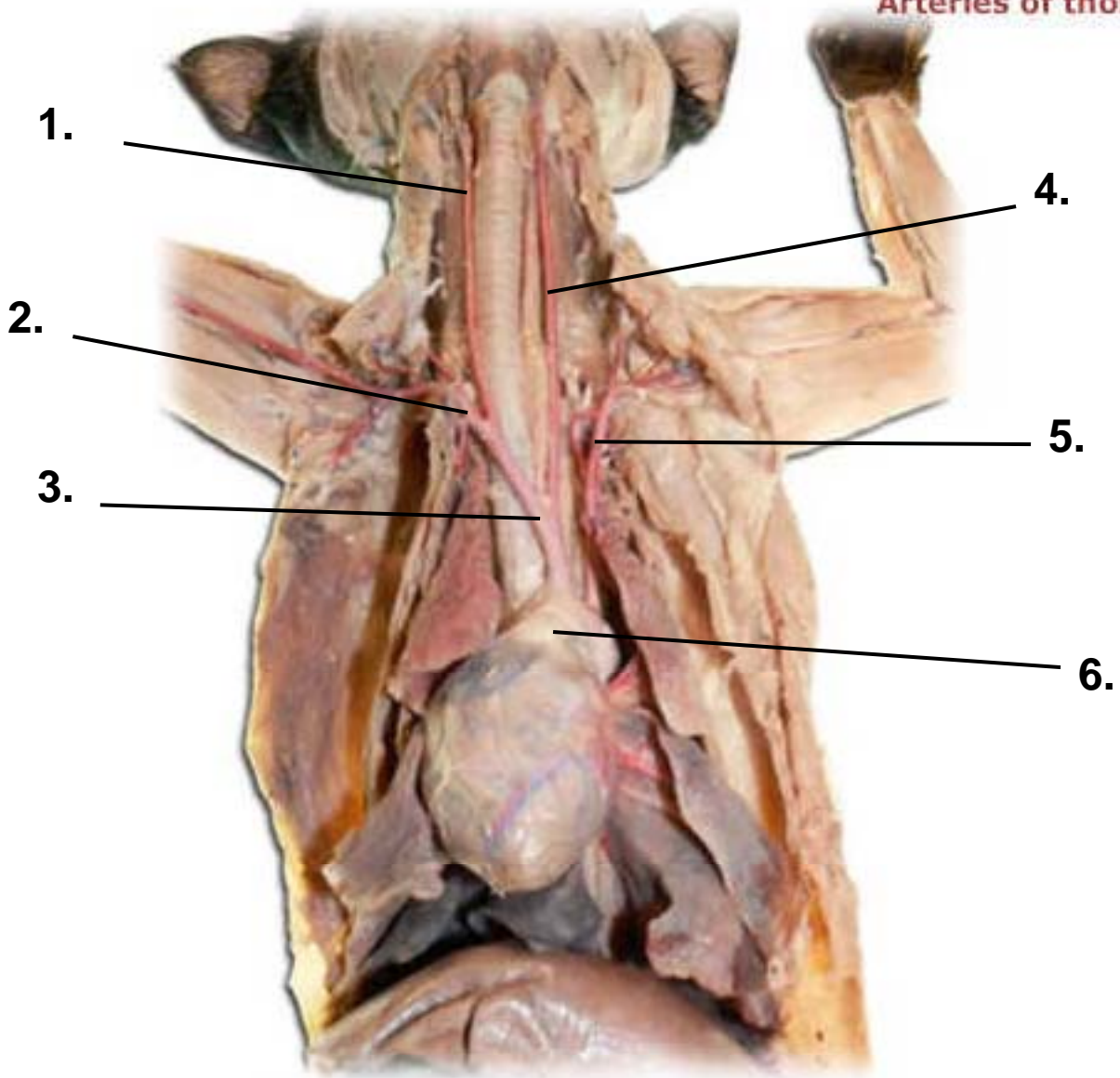


Blood Vessel Quiz

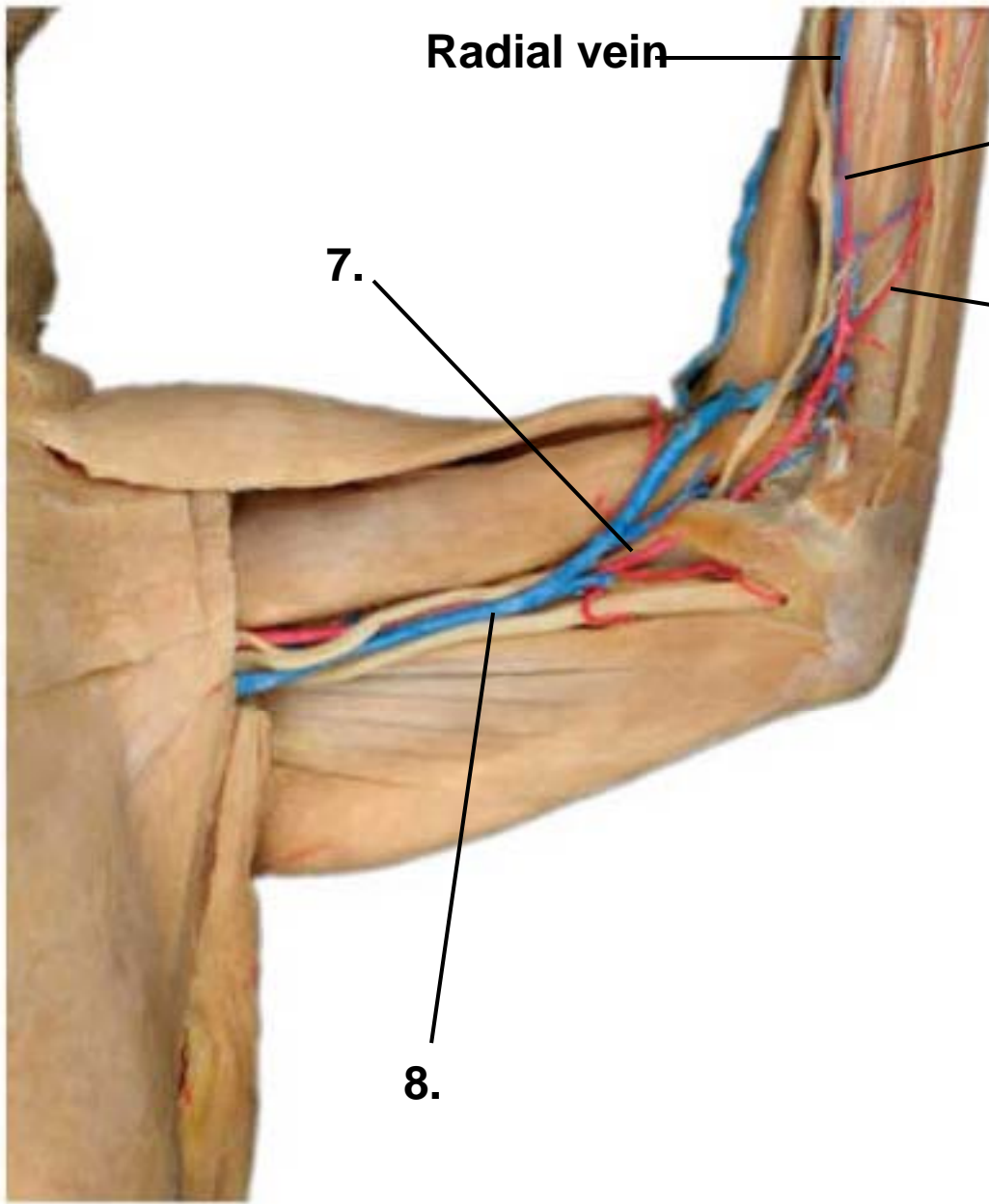


Wait...you wanna do *what* to me now?!!!

Arteries of thorax, ventral view



Arteries and veins of forelimb



Radial vein

Radial artery

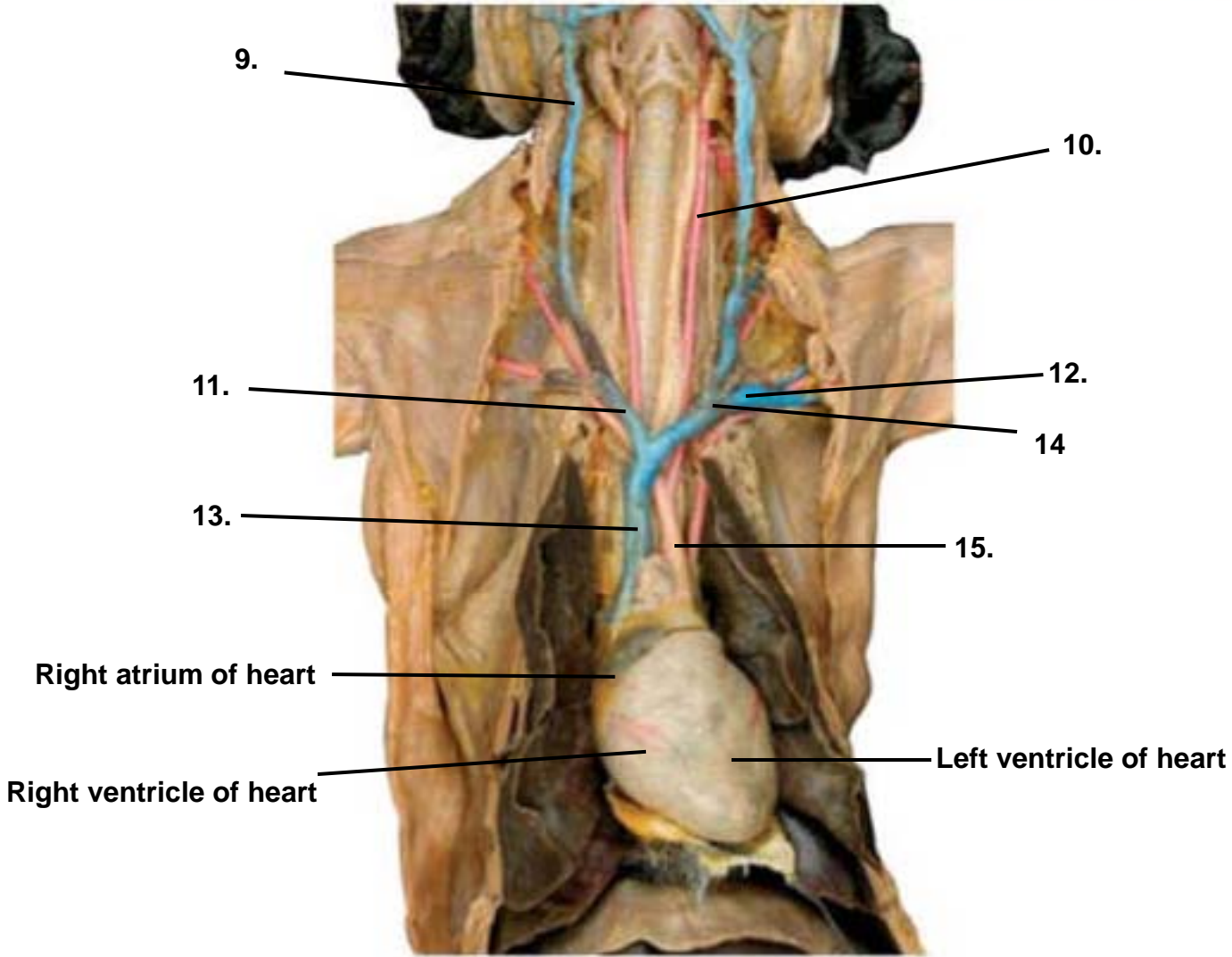
Ulnar artery

7.

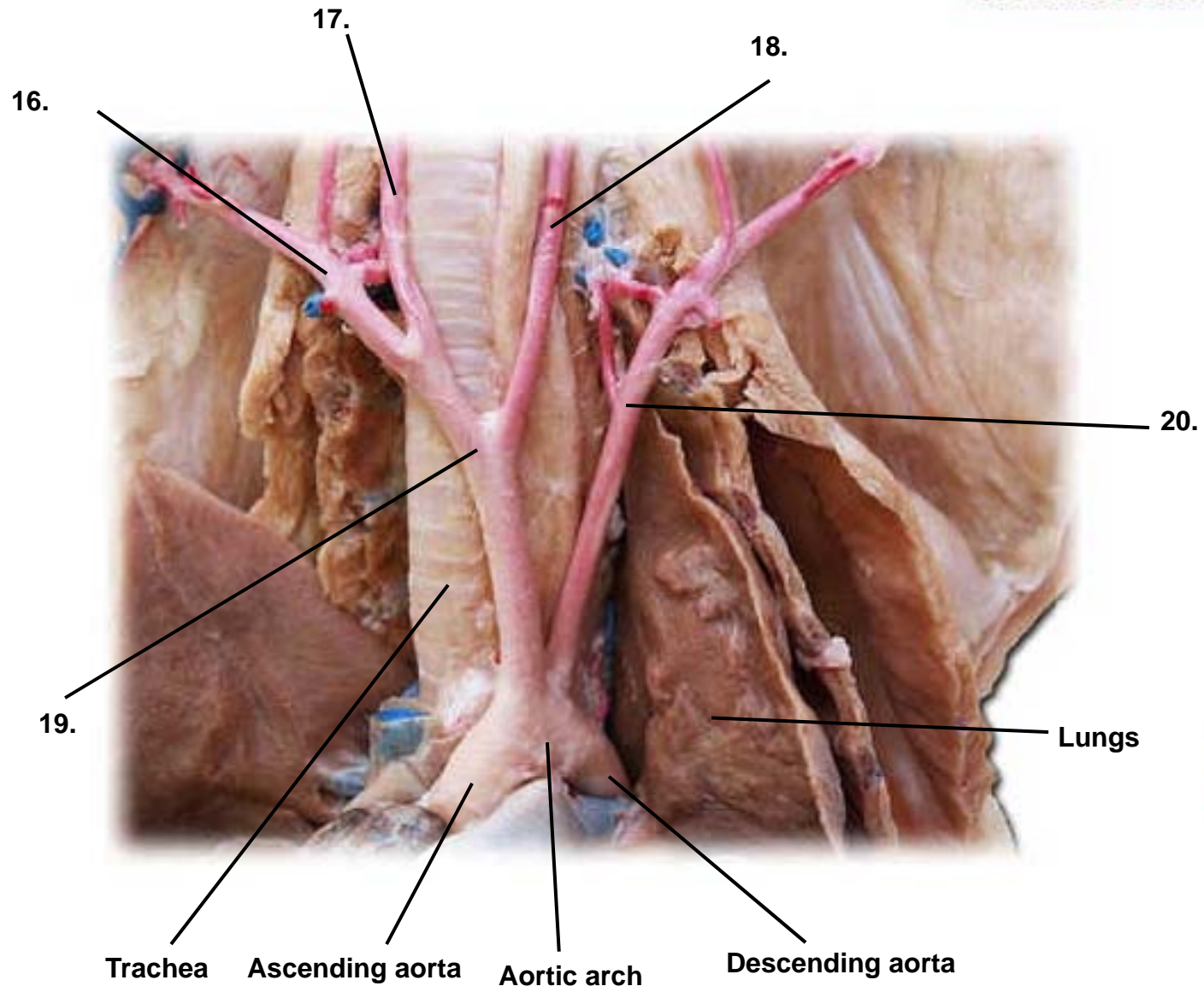
8.



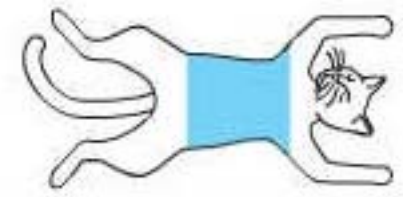
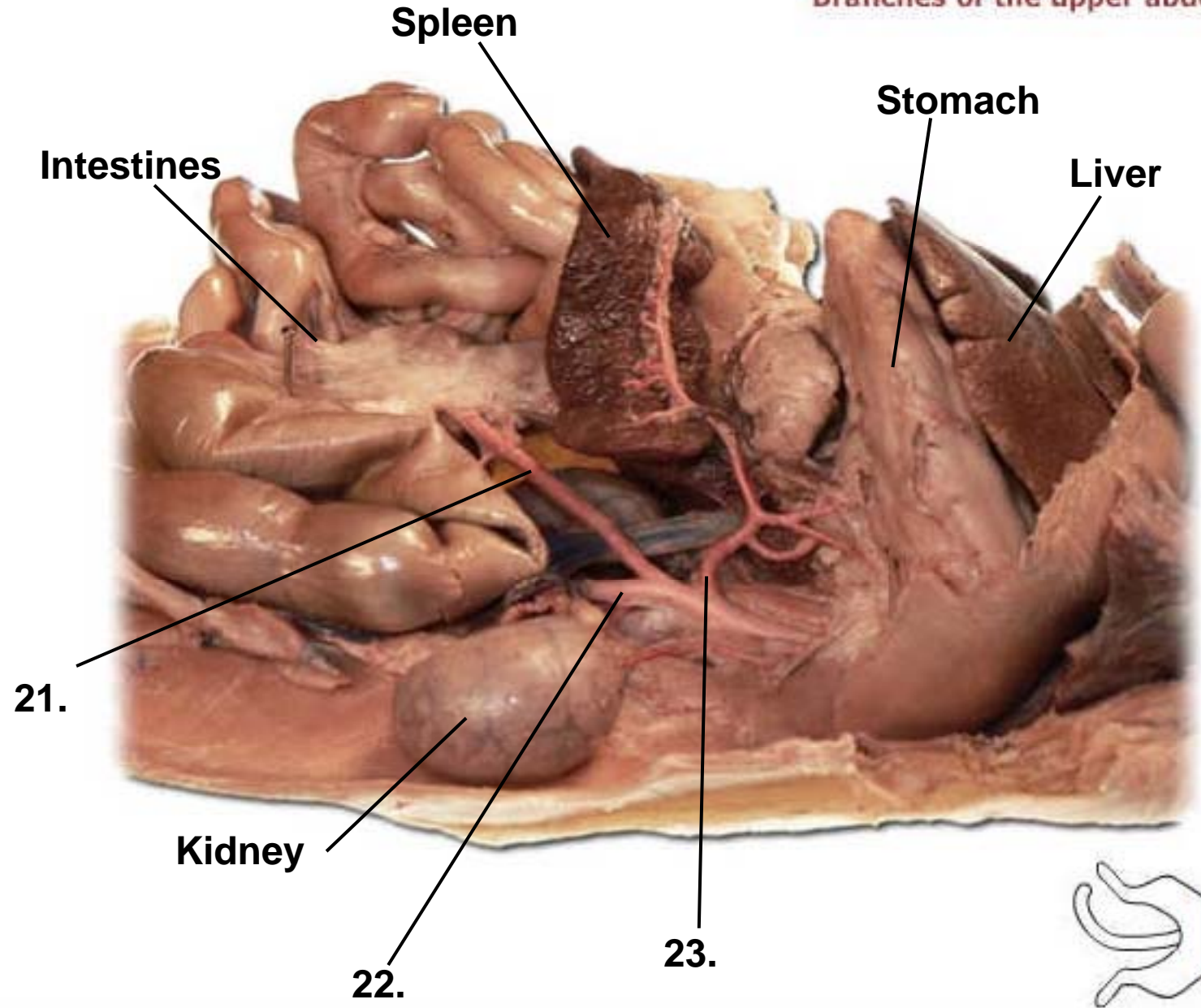
Vessels of thorax, ventral view



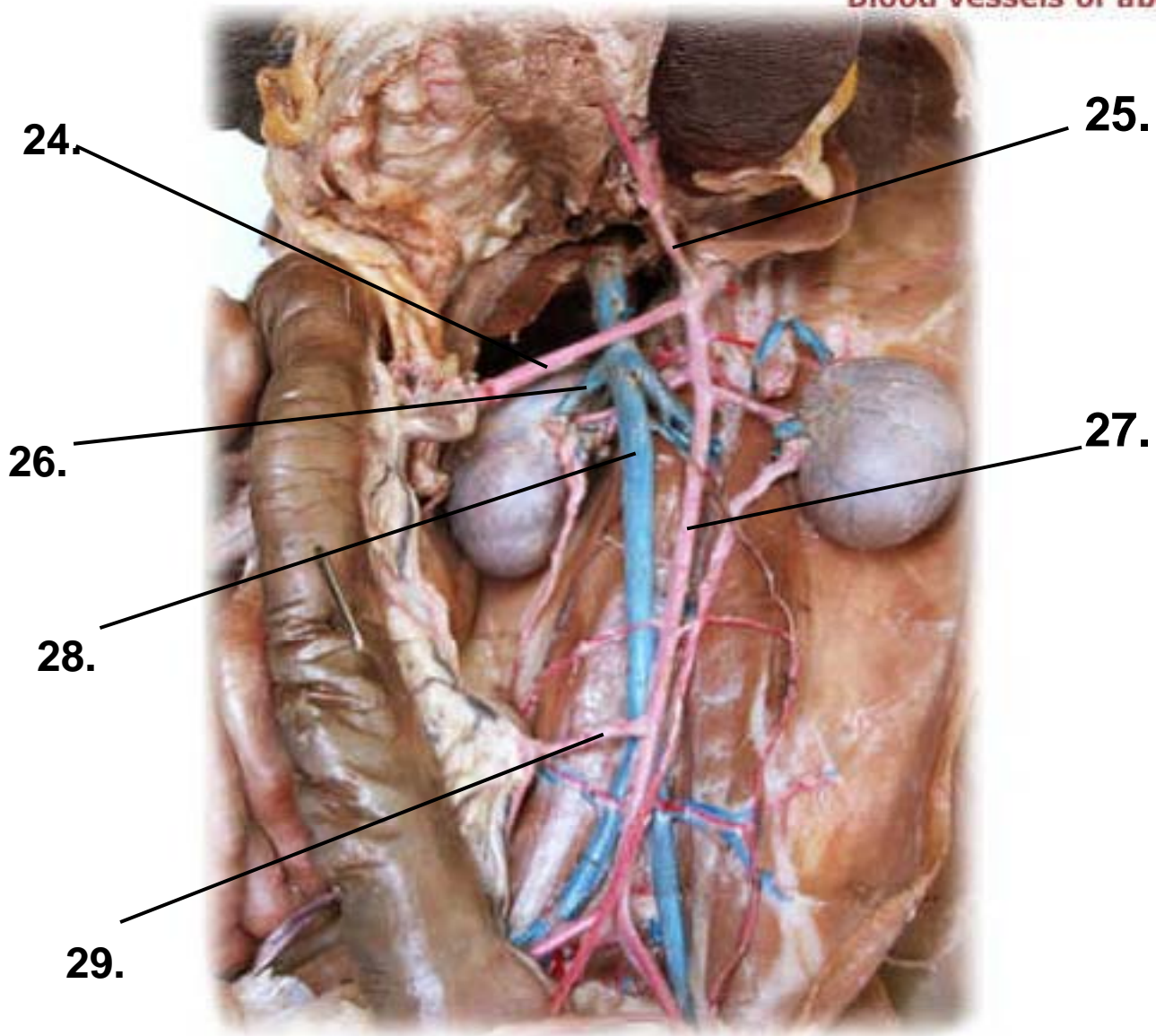
Branches of the aortic arch



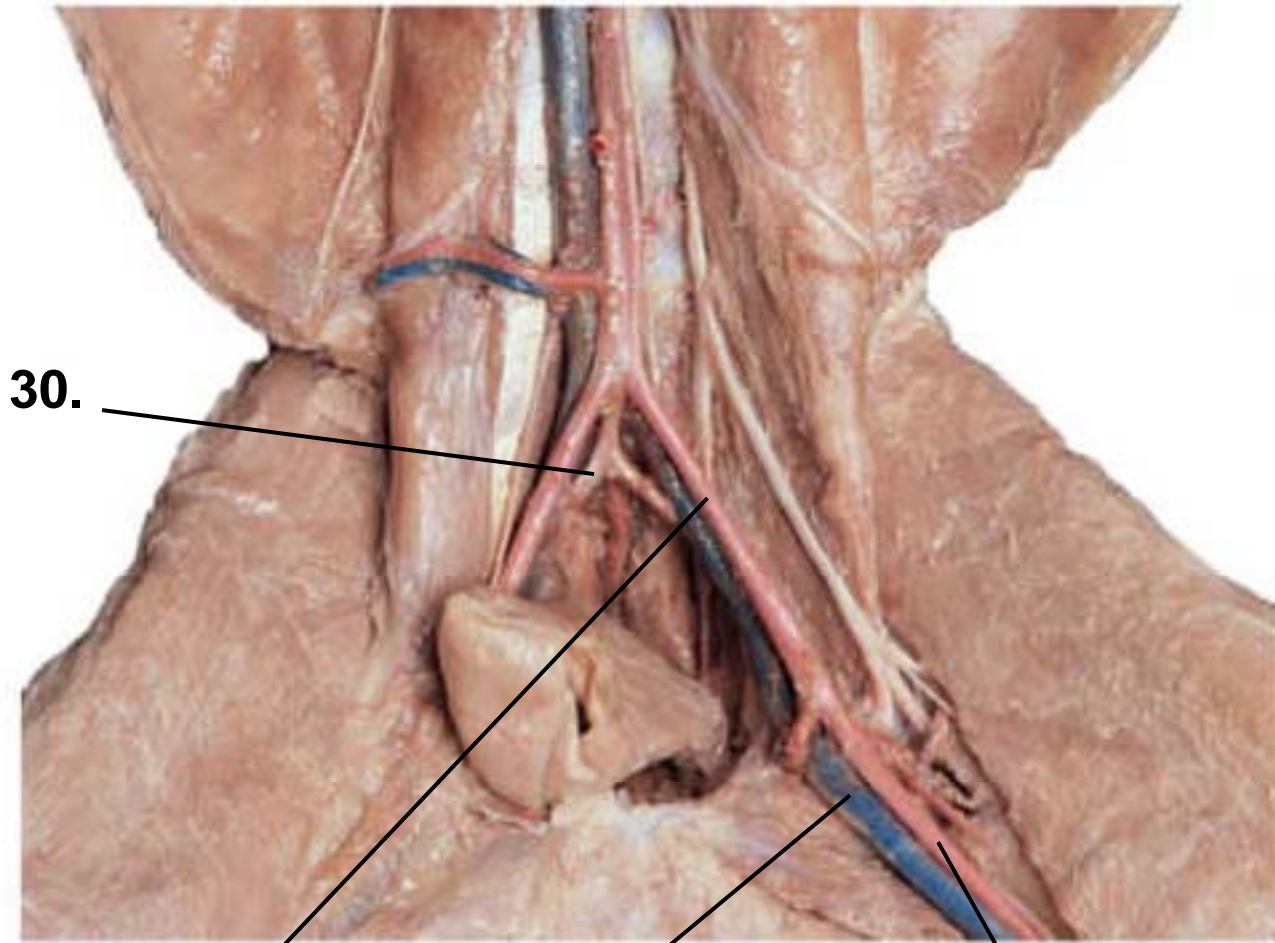
Branches of the upper abdominal aorta



Blood vessels of abdominal cavity



Vessels of pelvis and upper thigh



30.

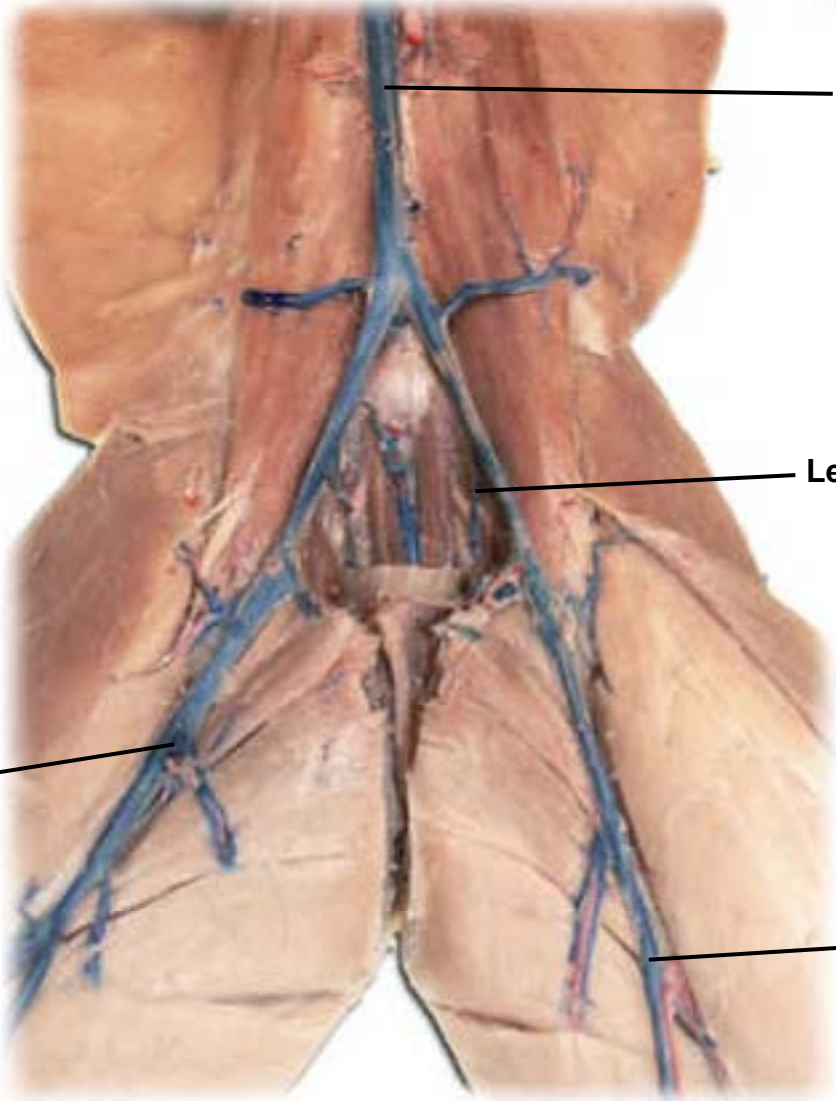
31.

32.

33.



Veins of the pelvis and leg



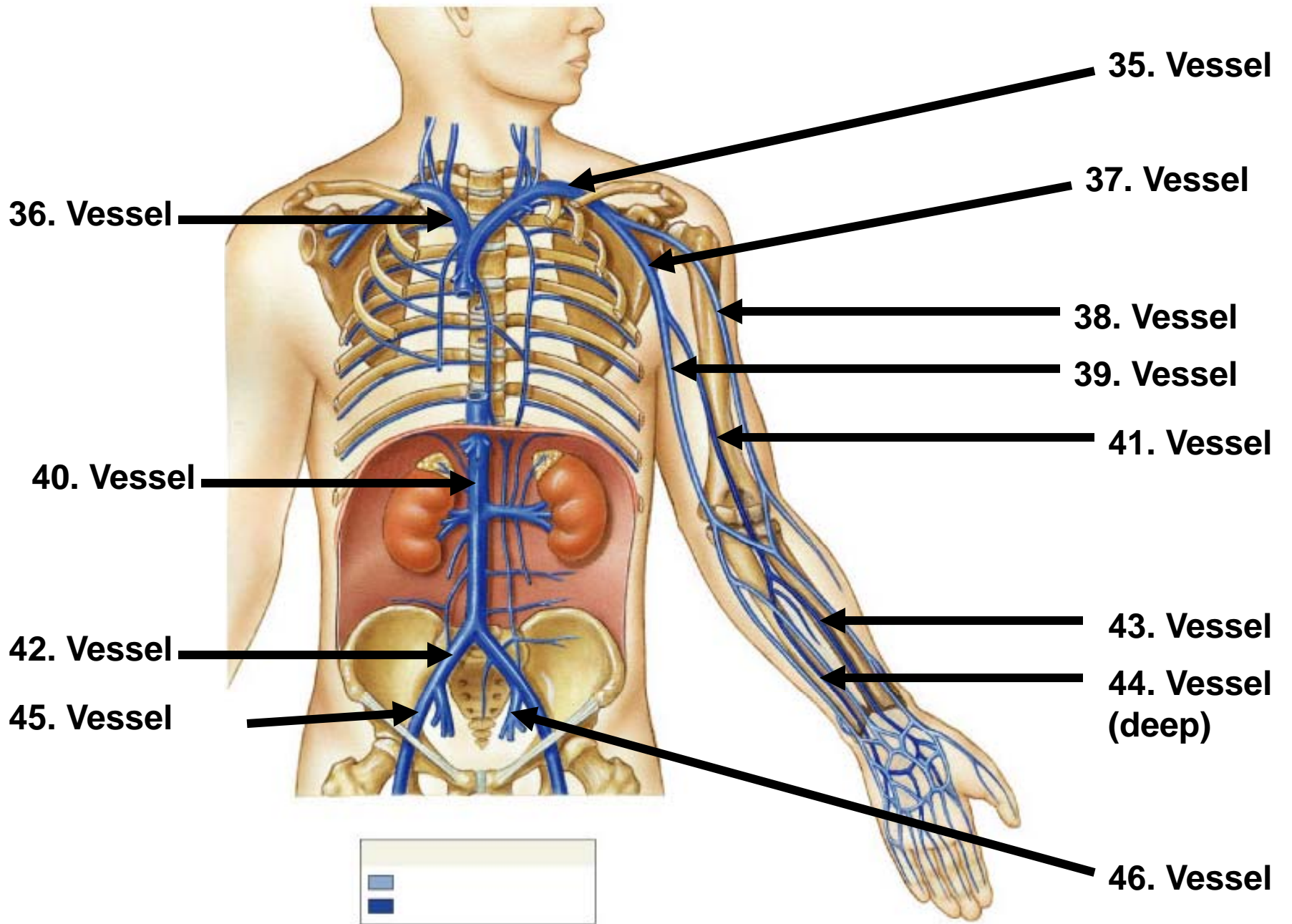
Inferior vena cava

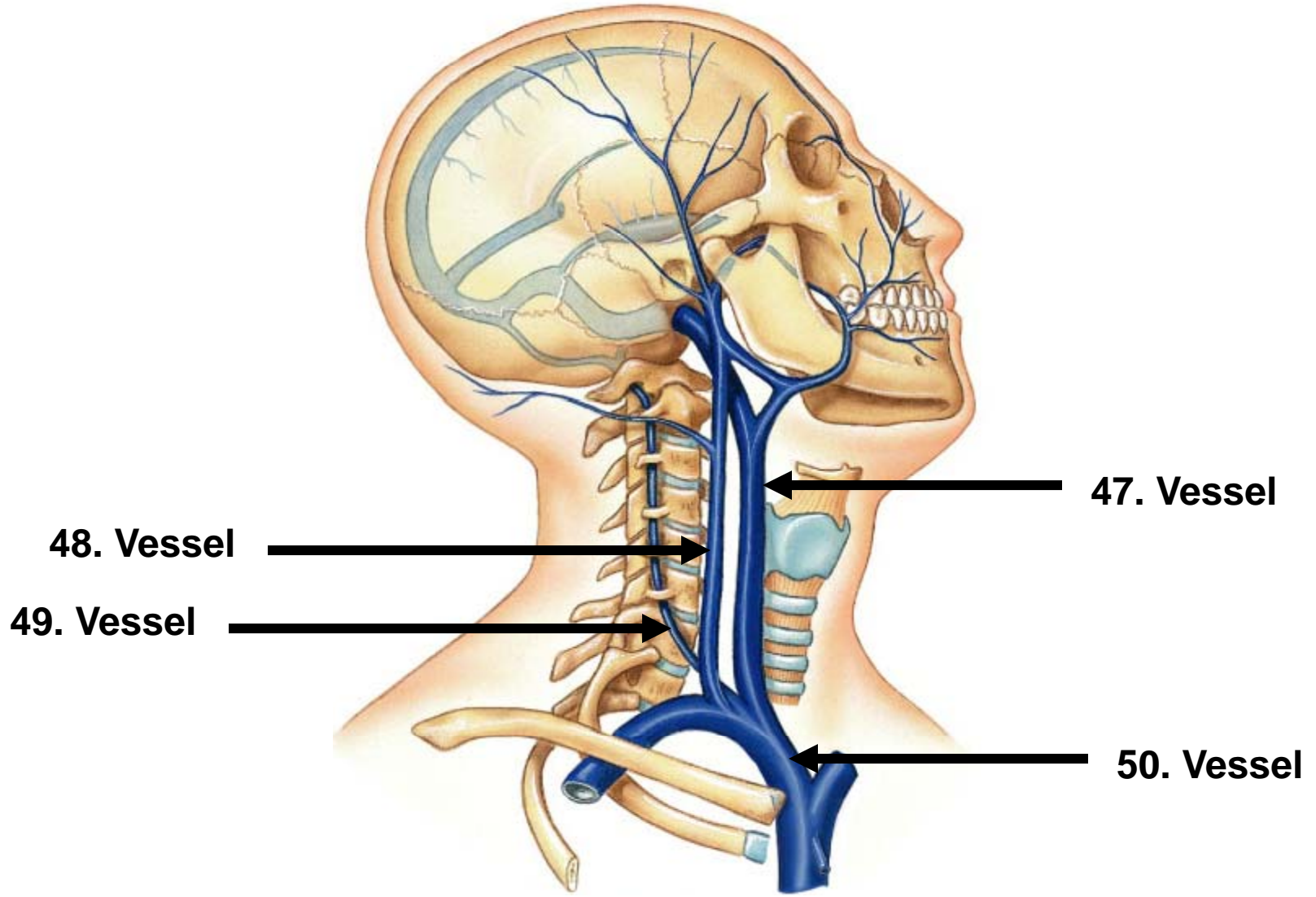
Left internal iliac vein

Femoral vein

34.



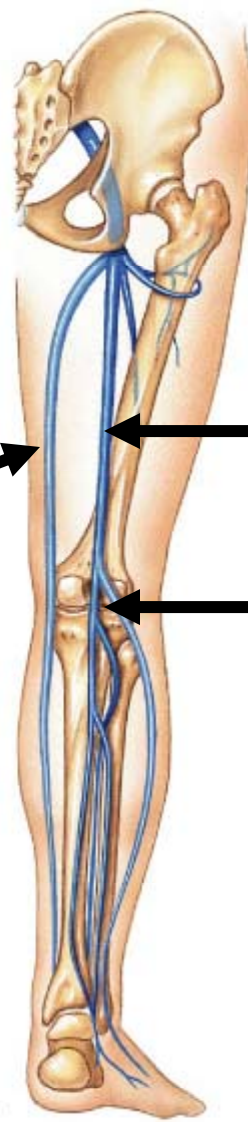






(a) Anterior

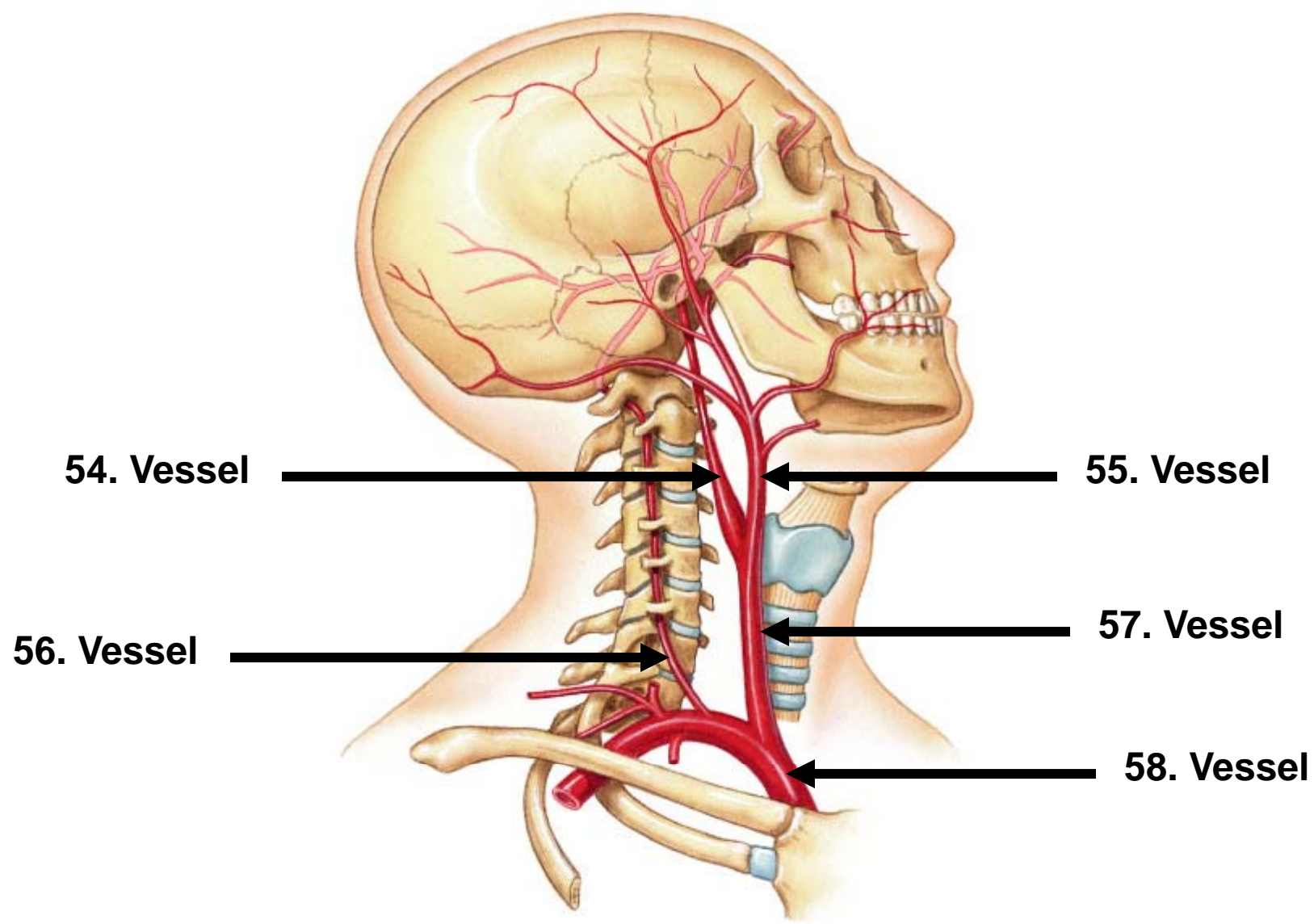
52. Vessel

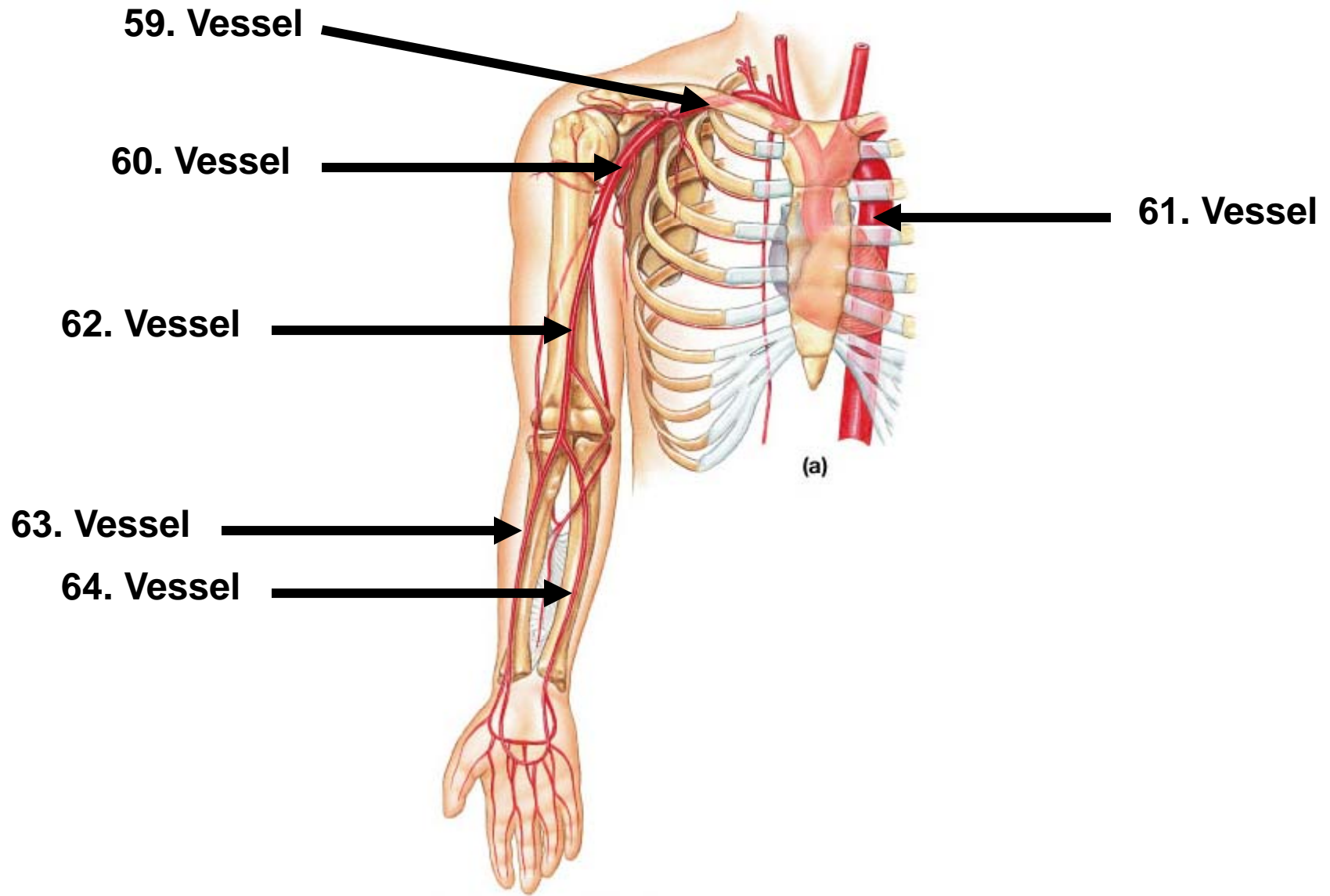


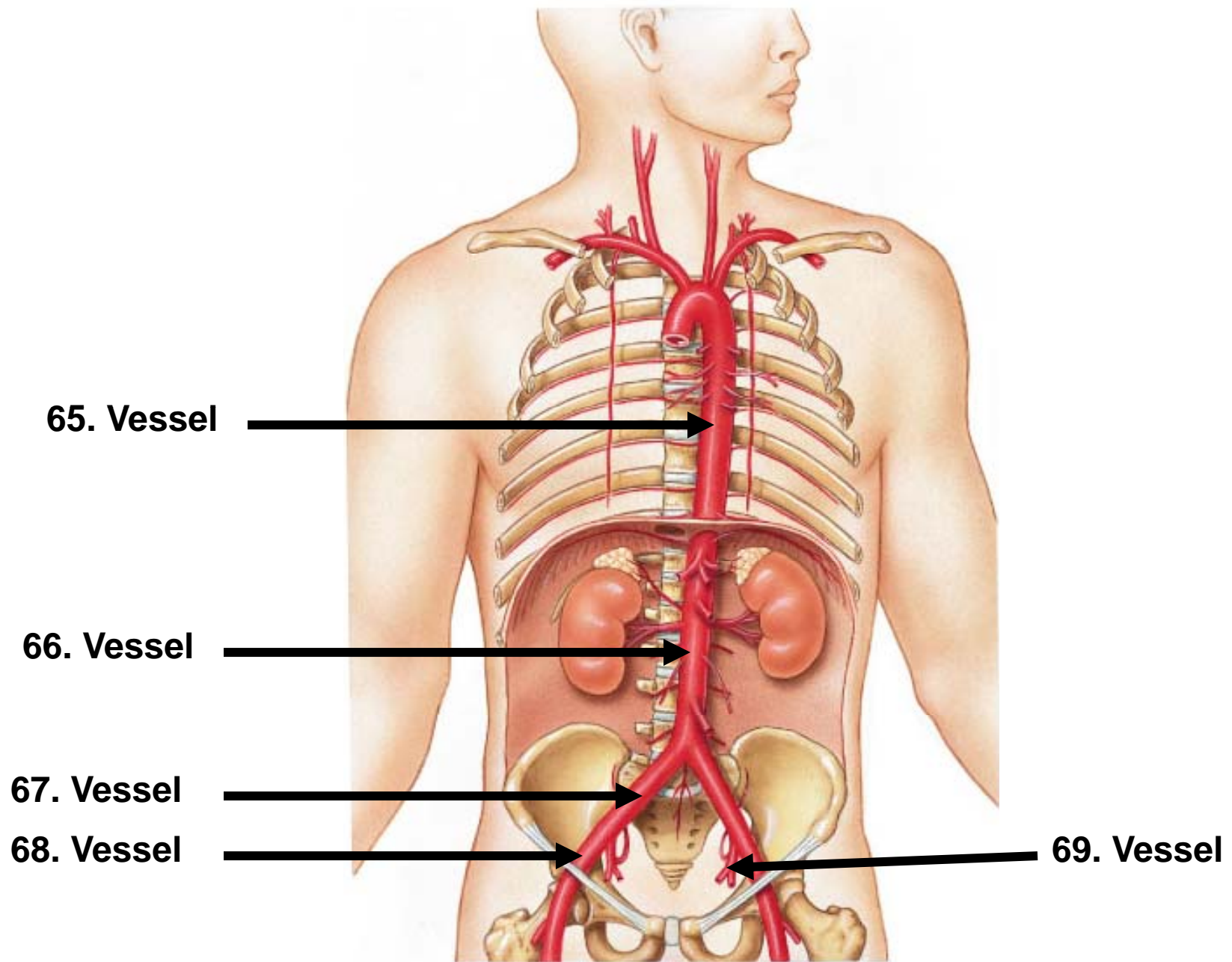
Posterior **(b)**

51. Vessel

53. Vessel





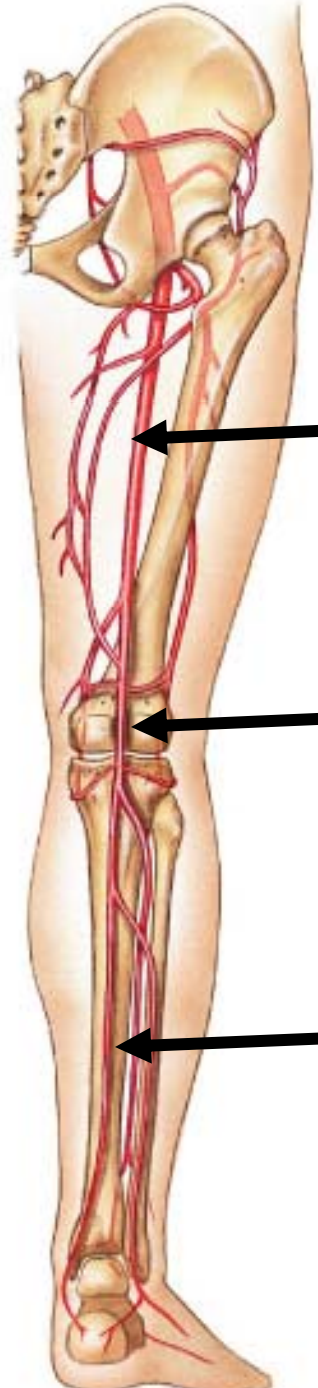


70. Vessel



(a) Anterior

71. Vessel



Posterior **(b)**

72. Vessel



73. Vessel



Arteries of thorax, ventral view

1. Right common carotid artery

2. Right subclavian artery

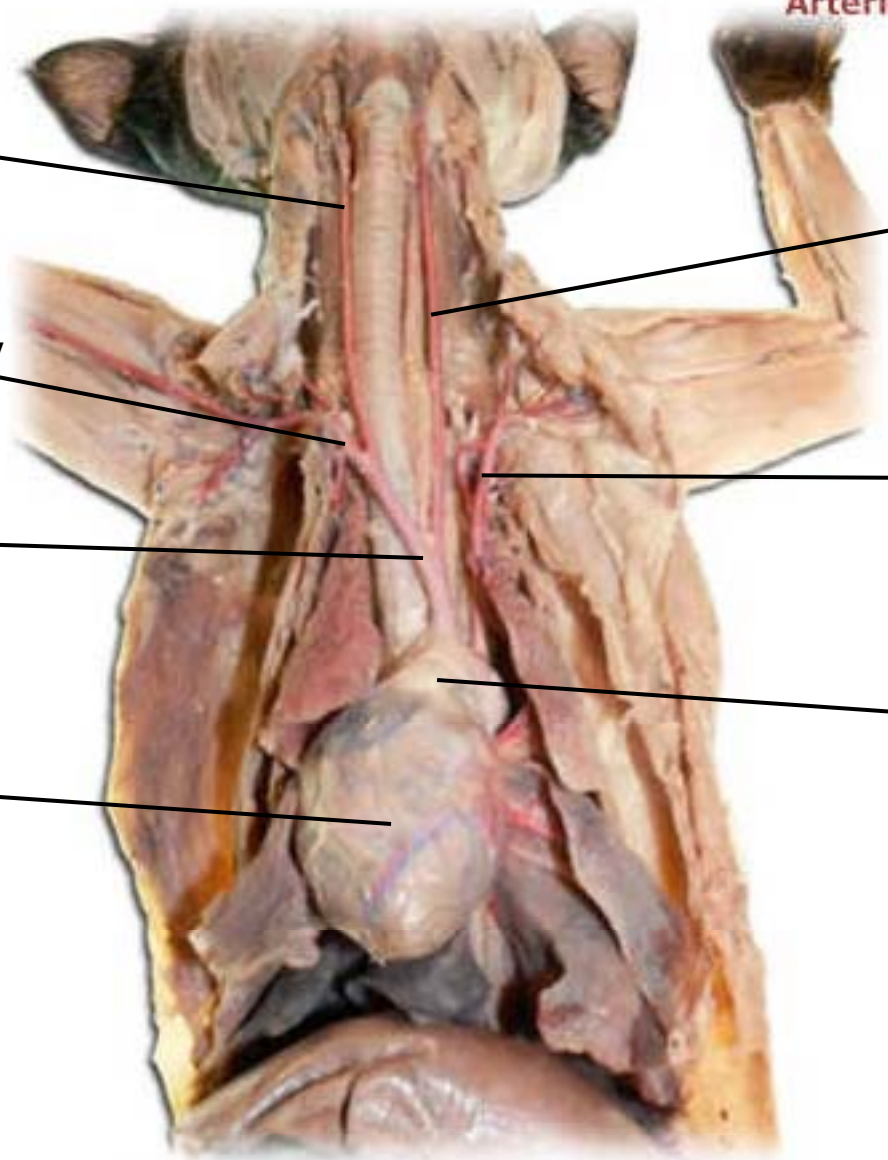
3. Brachiocephalic artery

Heart (within pericardium)

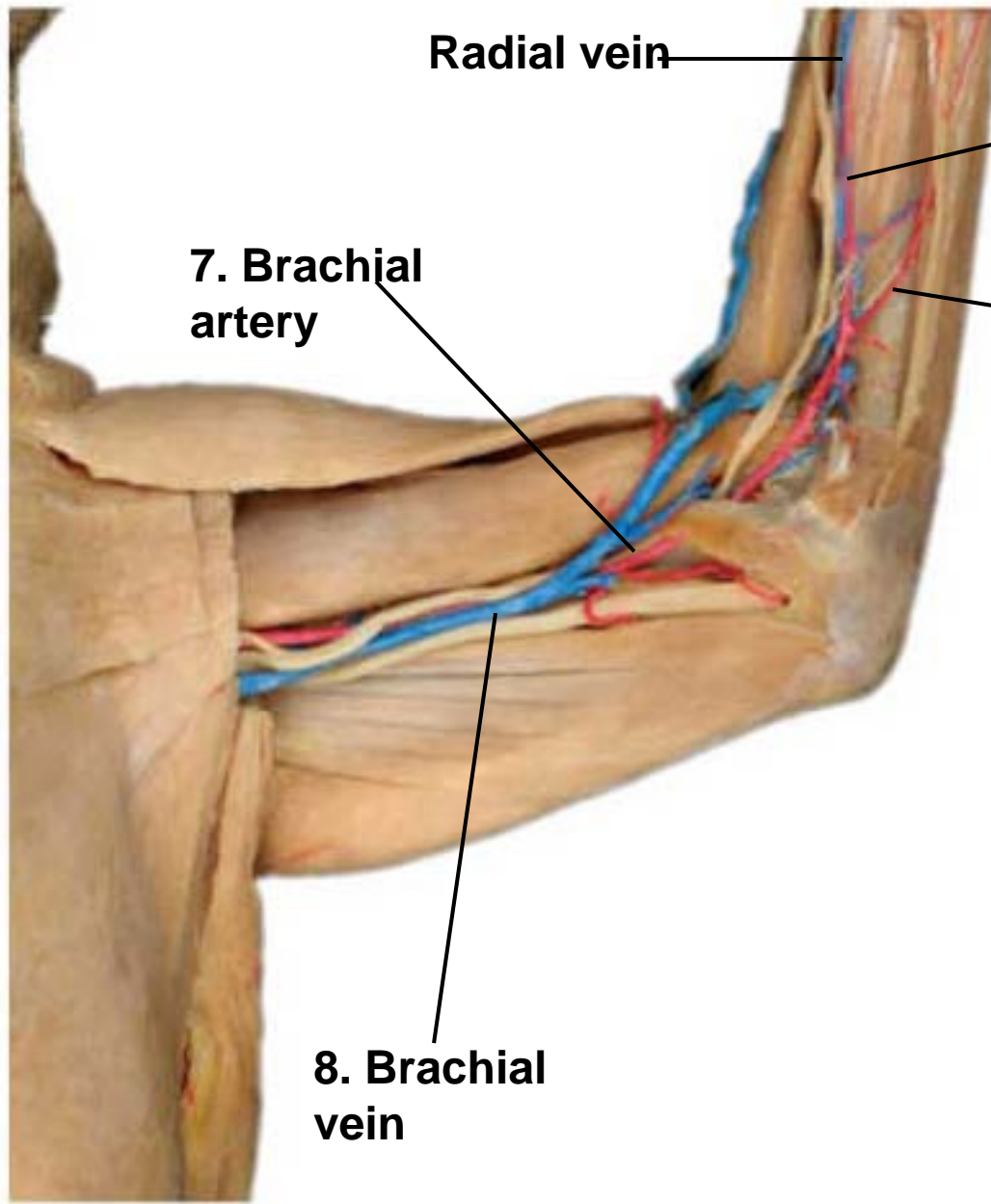
4. Left common carotid artery

5. Left subclavian artery

6. Aorta



Arteries and veins of forelimb



Radial vein

Radial artery

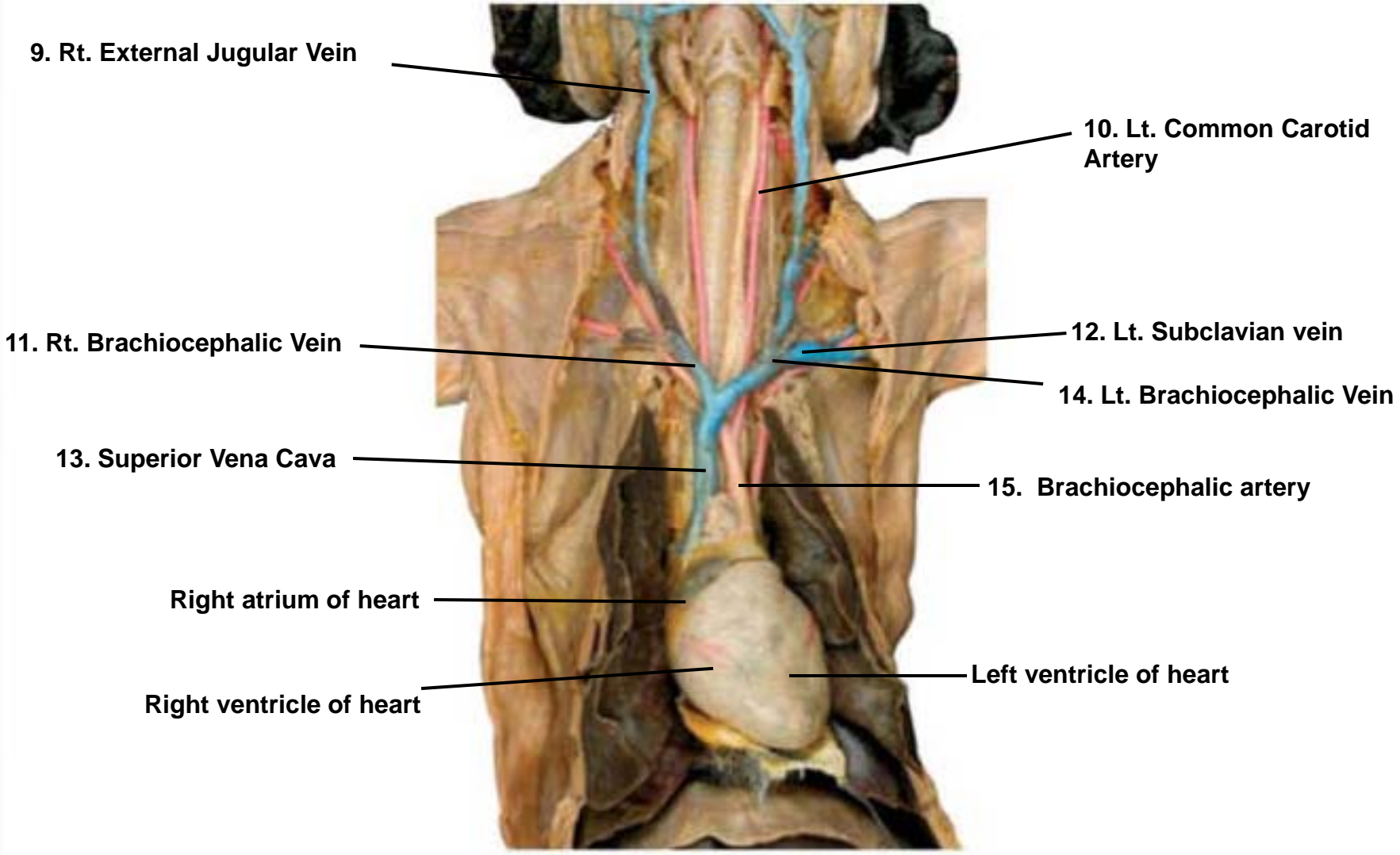
7. Brachial artery

Ulnar artery

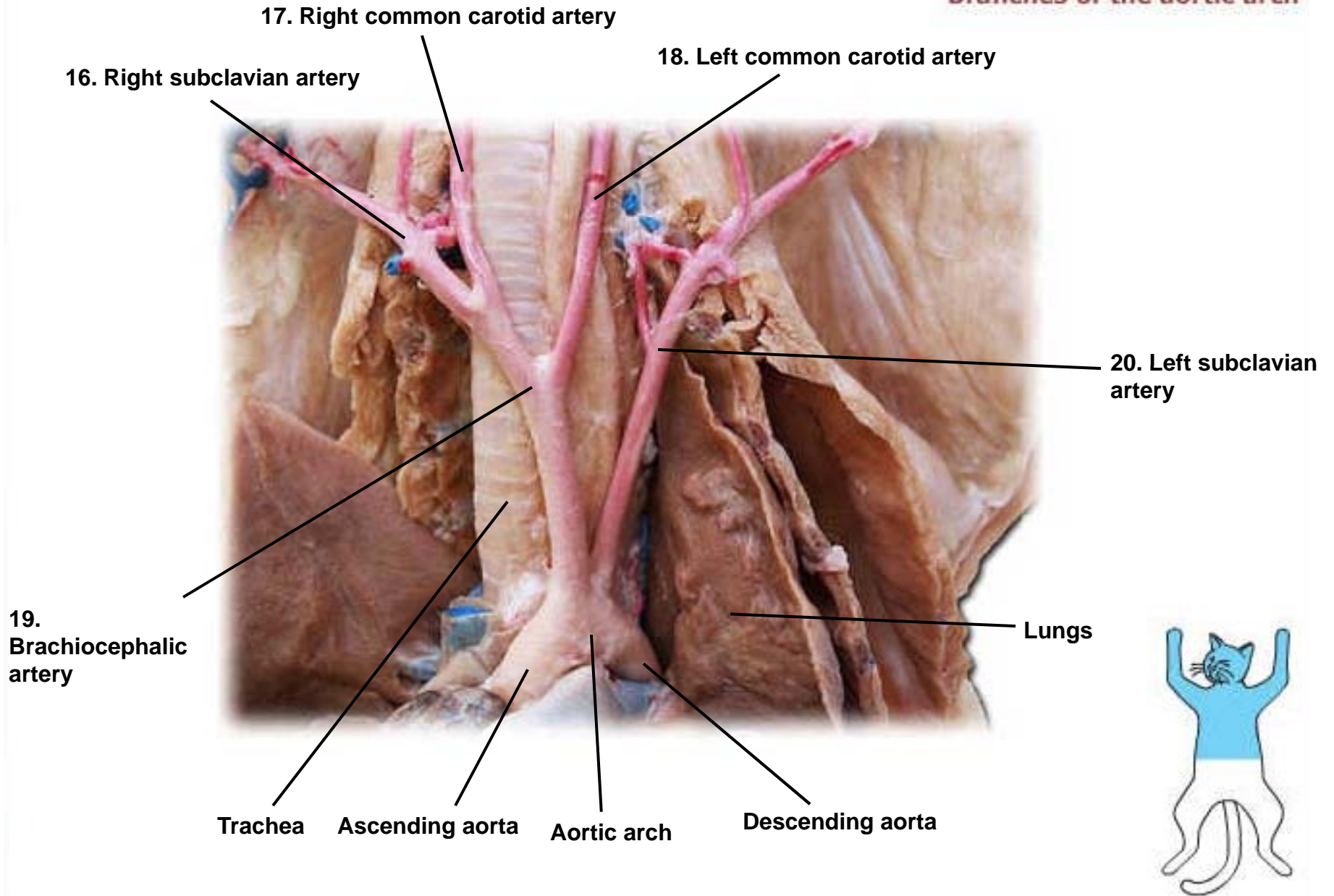
8. Brachial vein



Vessels of thorax, ventral view

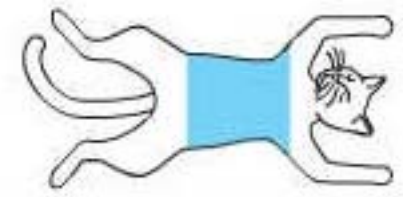
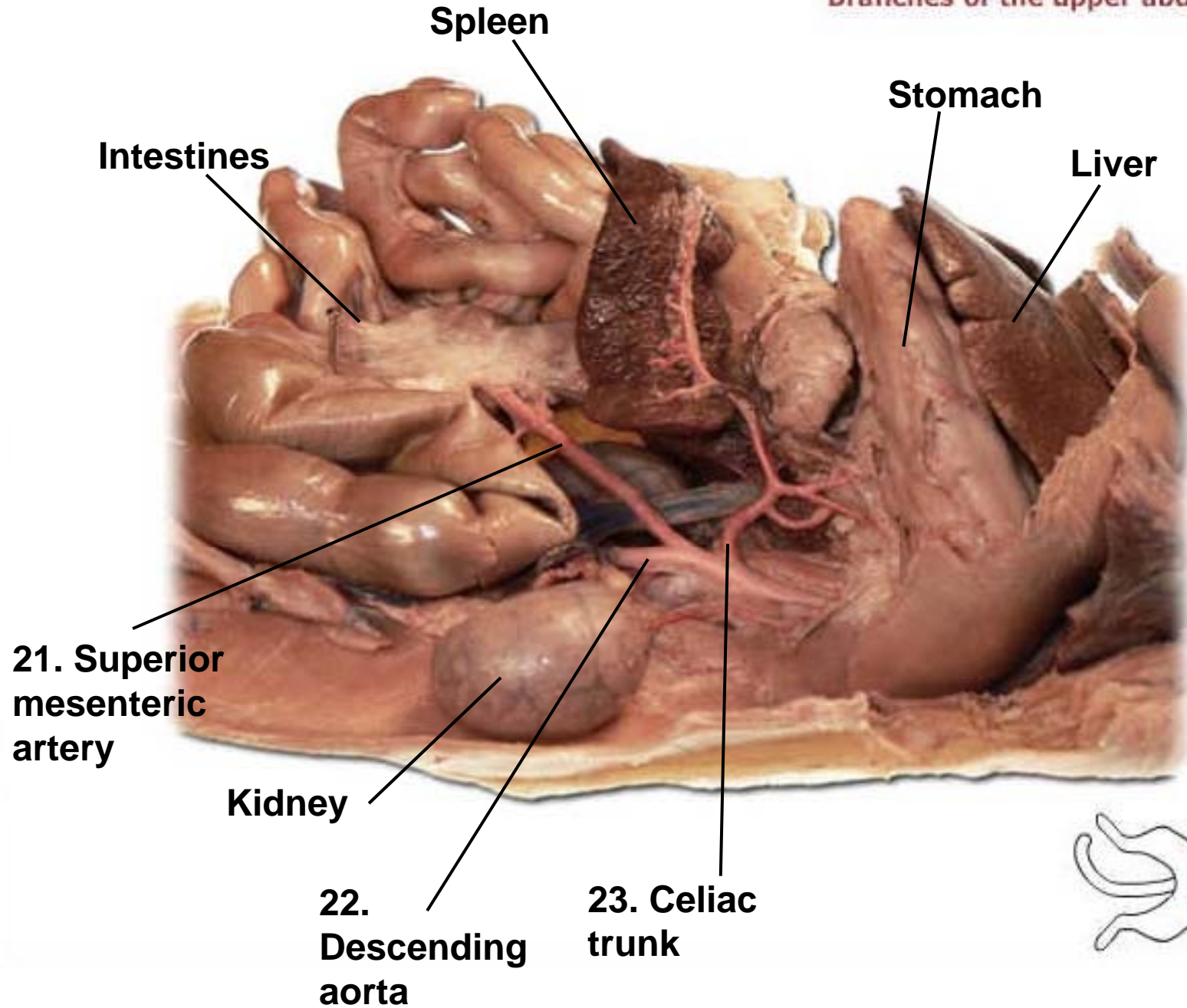


Branches of the aortic arch



*Note the differences from the human

Branches of the upper abdominal aorta



Blood vessels of abdominal cavity

24. Superior mesenteric artery

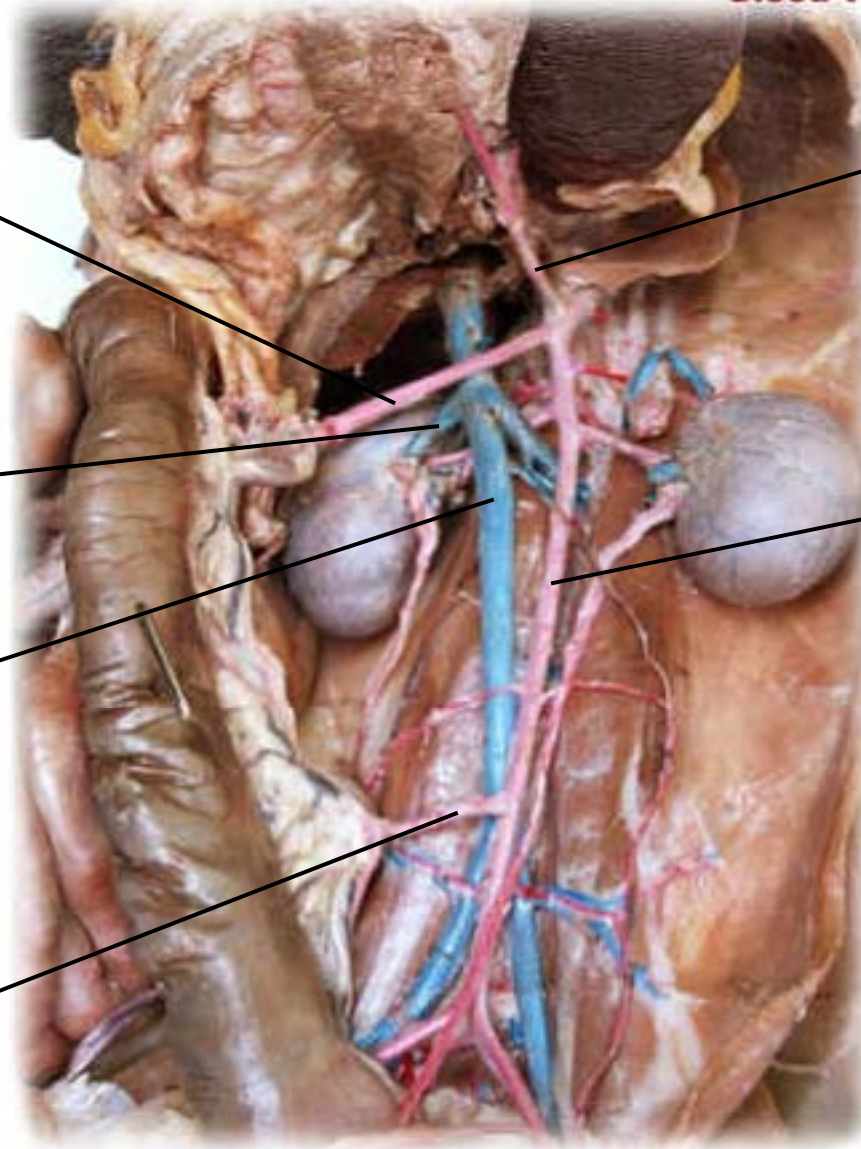
25. Celiac trunk

26. Renal vein

27. Descending aorta

28. Inferior vena cava

29. Inferior mesenteric artery



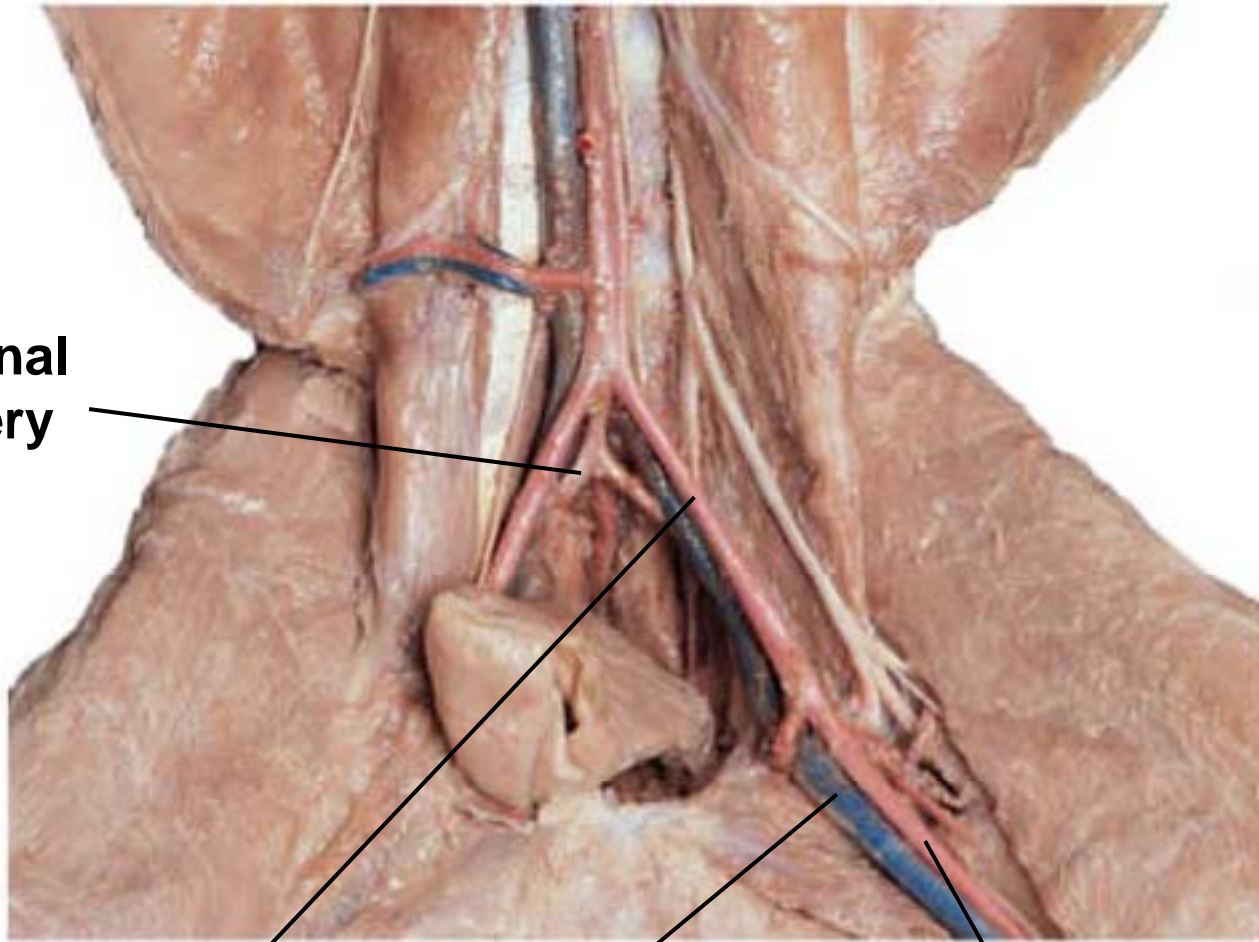
Vessels of pelvis and upper thigh

30. Internal iliac artery

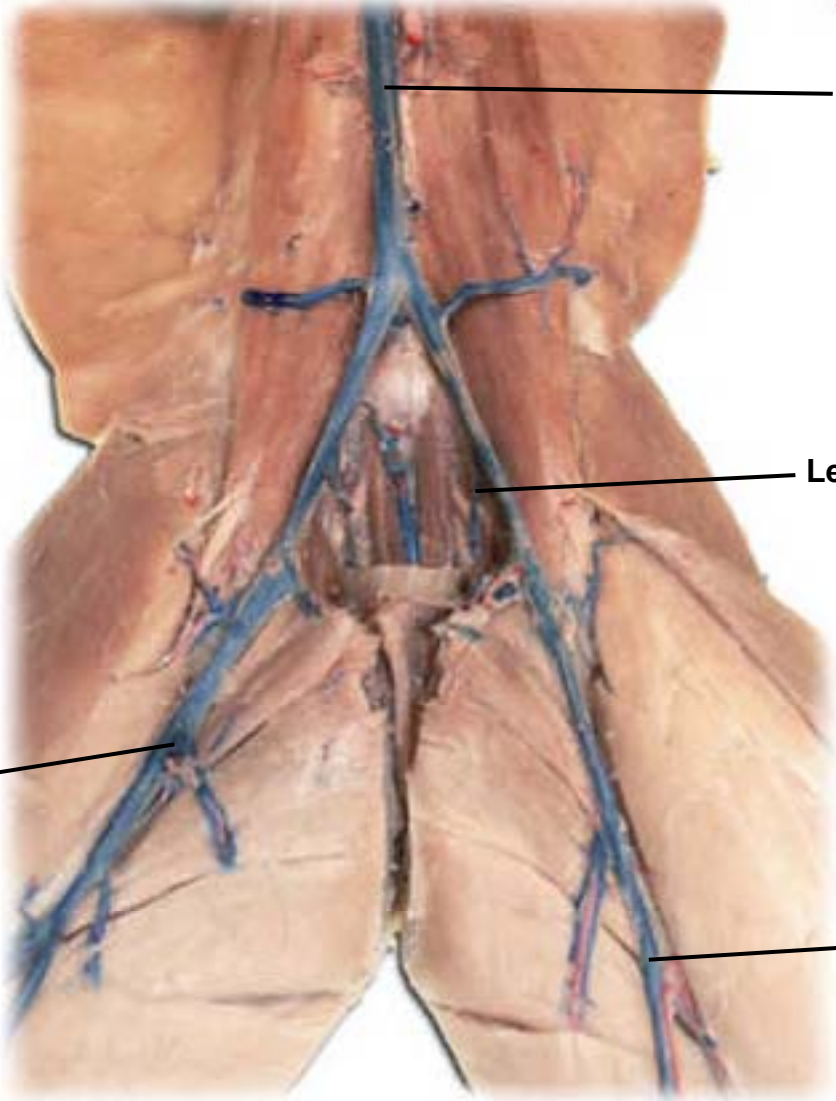
31. External iliac artery

32. Left femoral vein

33. Left femoral artery



Veins of the pelvis and leg

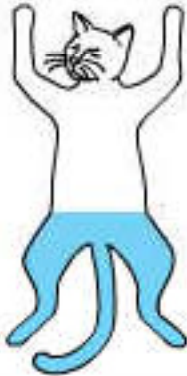


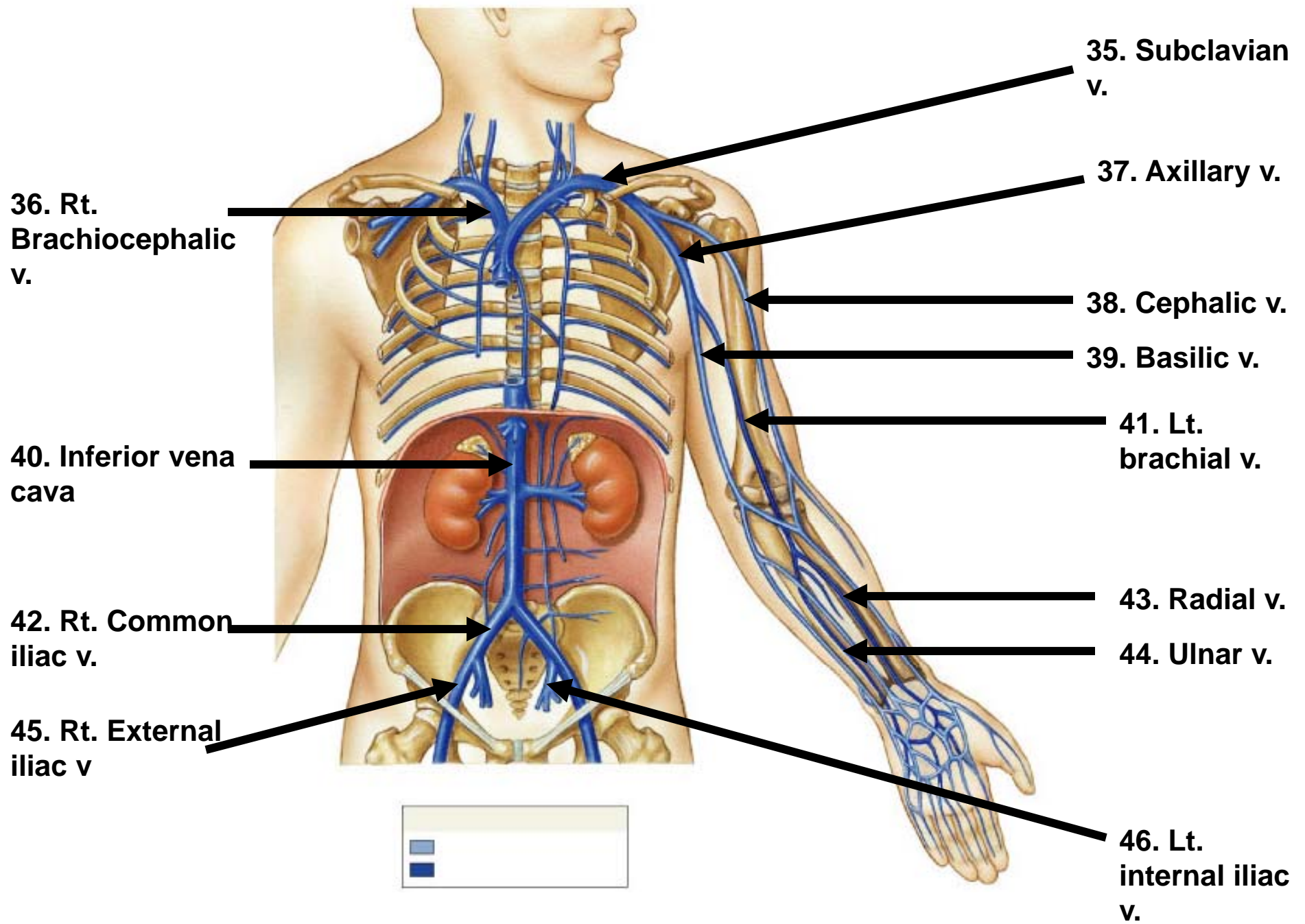
Inferior vena cava

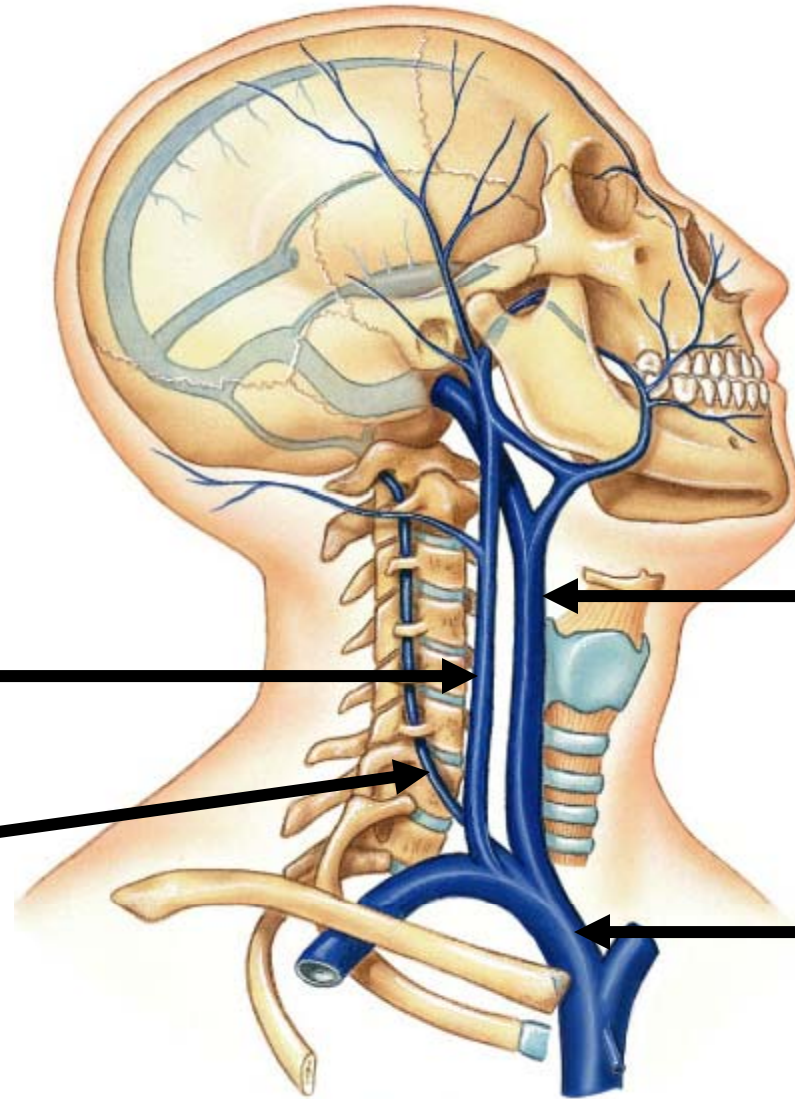
Left internal iliac vein

Femoral vein

34. Great saphenous vein





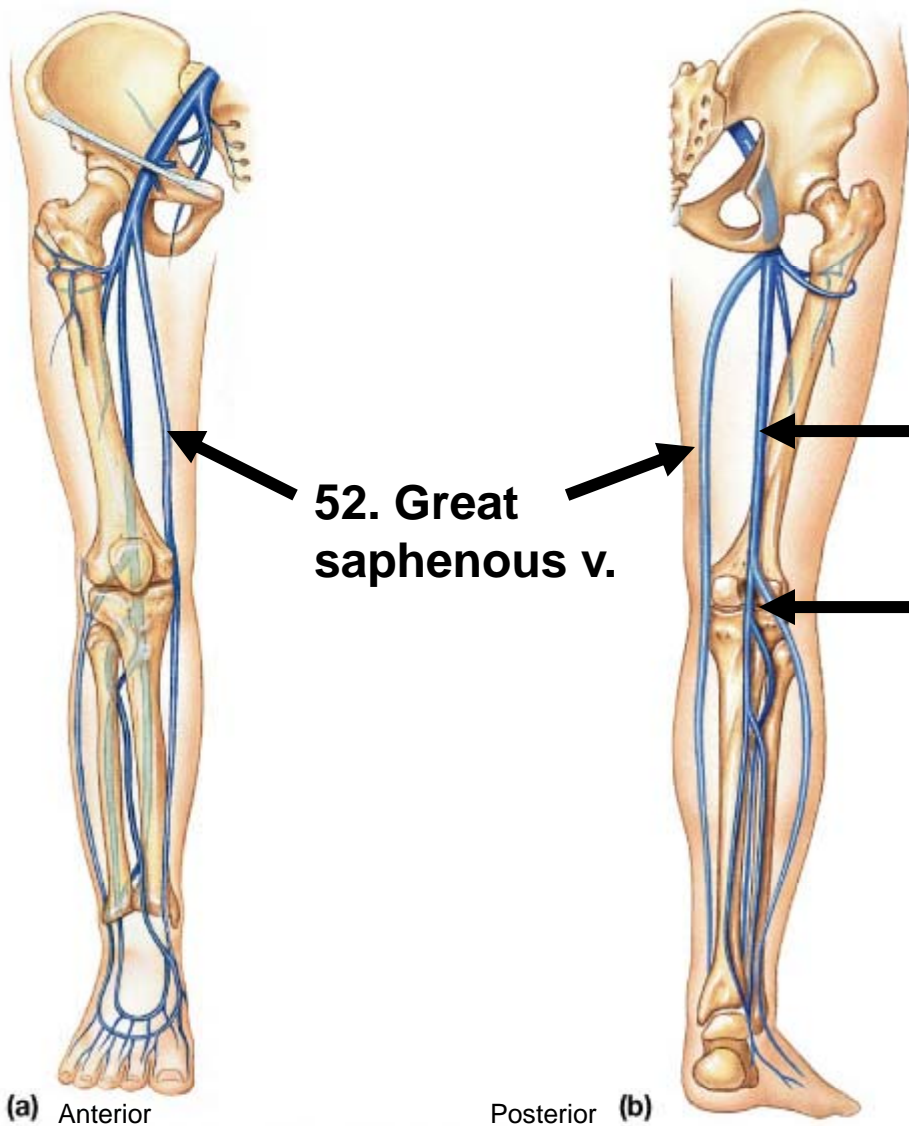


**48. External
jugular v.**

49. Vertebral v.

**47. Internal
jugular v.**

**50.
Brachiocephalic
v.**



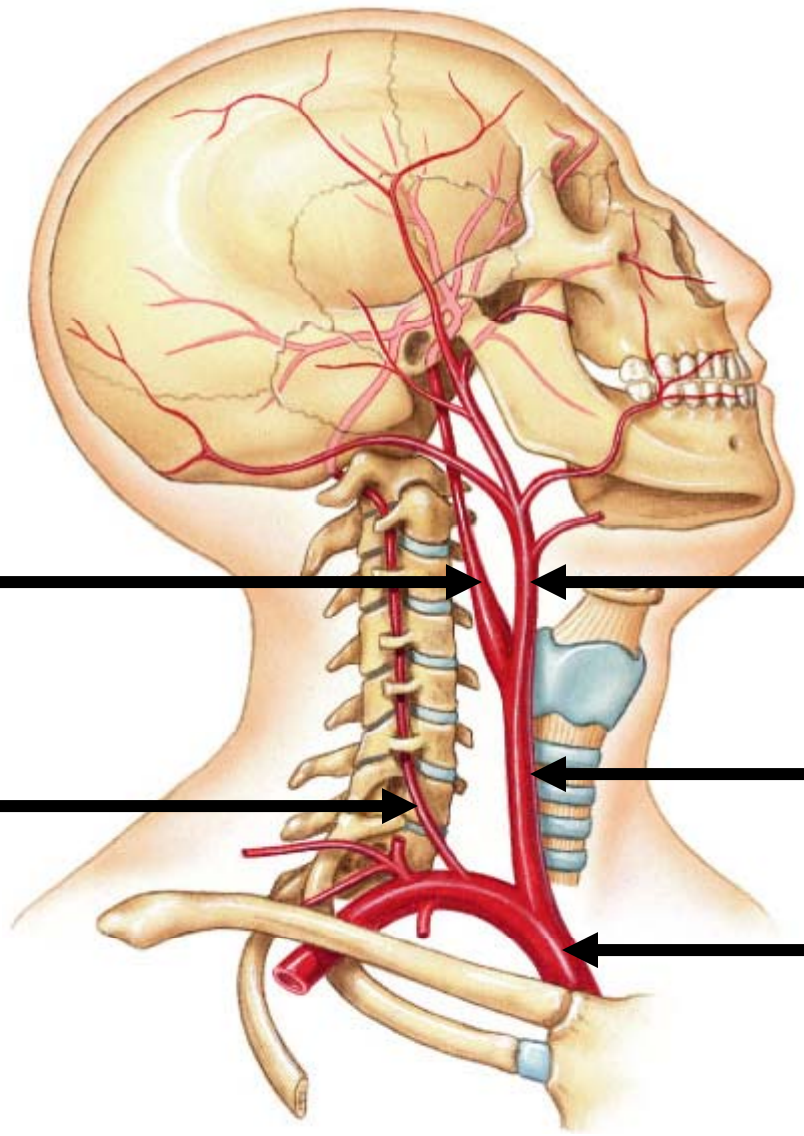
(a) Anterior

Posterior (b)

52. Great saphenous v.

51. Femoral v.

53. Popliteal v.



54. Internal carotid a.

55. External carotid a.

56. Vertebral a.

57. Common carotid a.

58. Brachiocephalic trunk

59. Subclavian a.

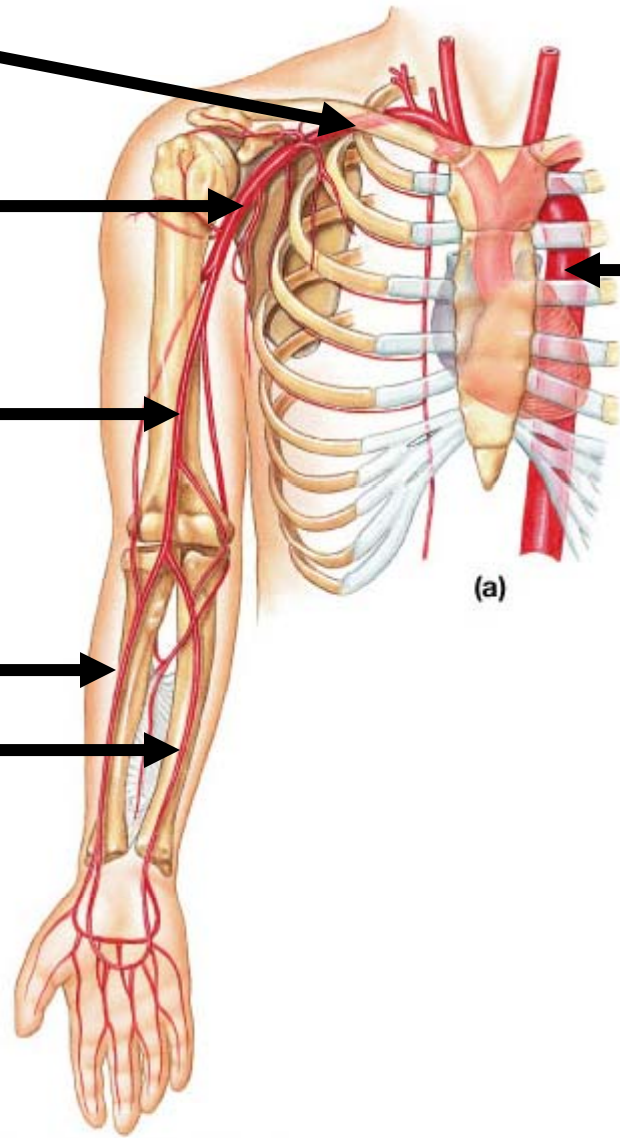
60. Axillary a.

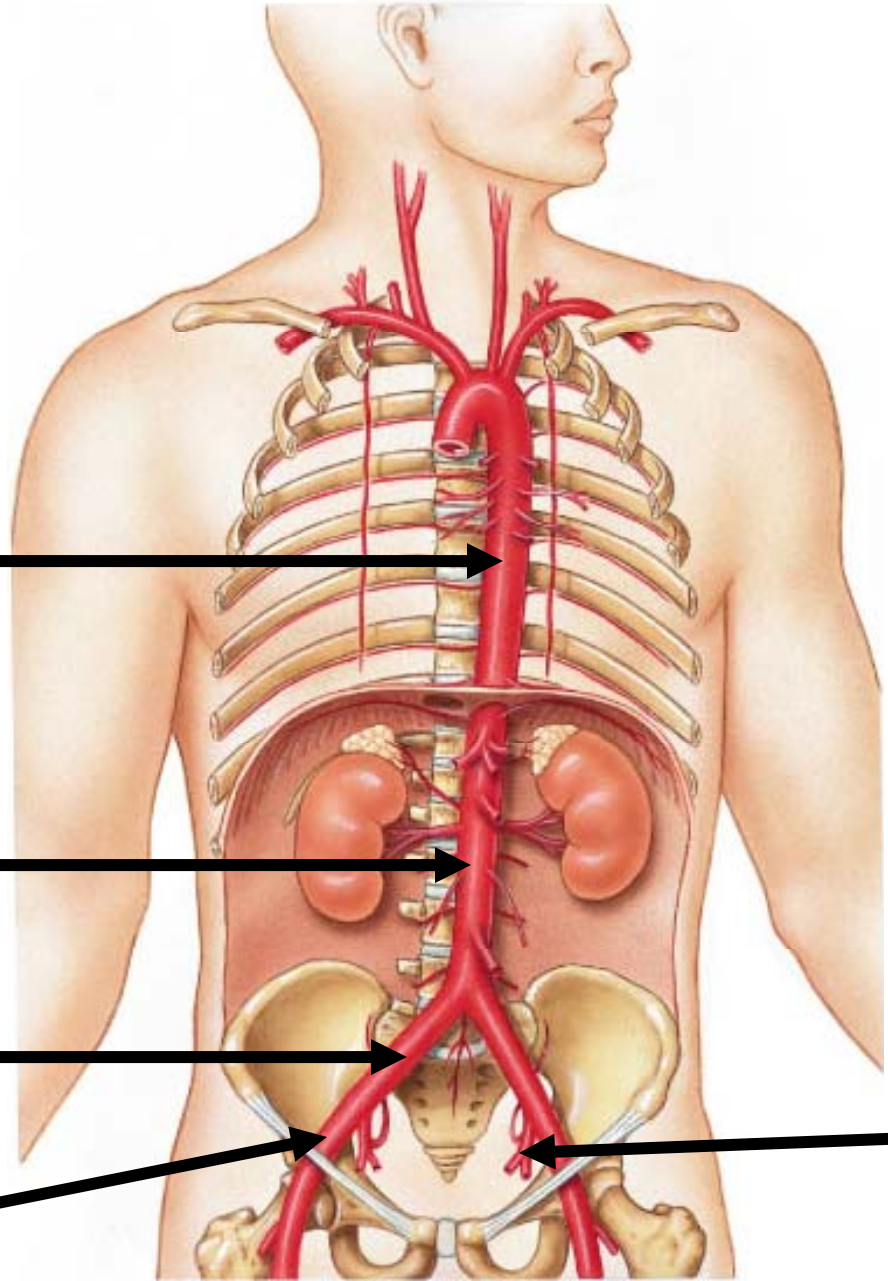
62. Brachial a.

63. Radial a.

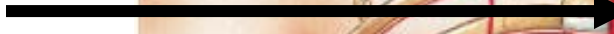
64. Ulnar a.

**61. Descending
aorta**





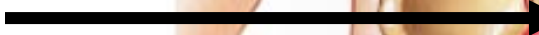
**65. Thoracic
aorta
(descending)**



**66. Abdominal
aorta
(descending)**



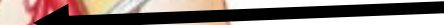
**67. Common
iliac a.**



**68.
External
iliac a.**



**69. Internal
iliac a.**

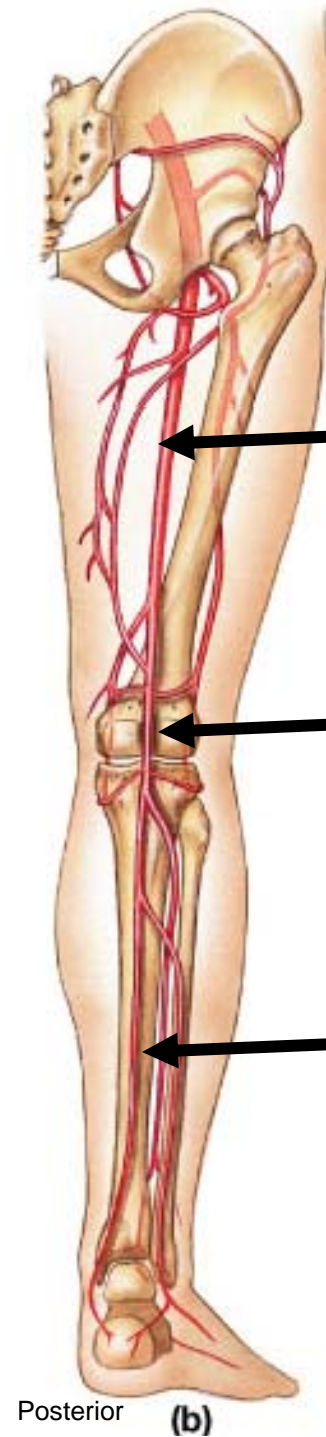


70.
Femoral a.



(a) Anterior

71.
Femoral a.



72.
Popliteal a.

73.
**Posterior
tibial a.**

Posterior **(b)**